

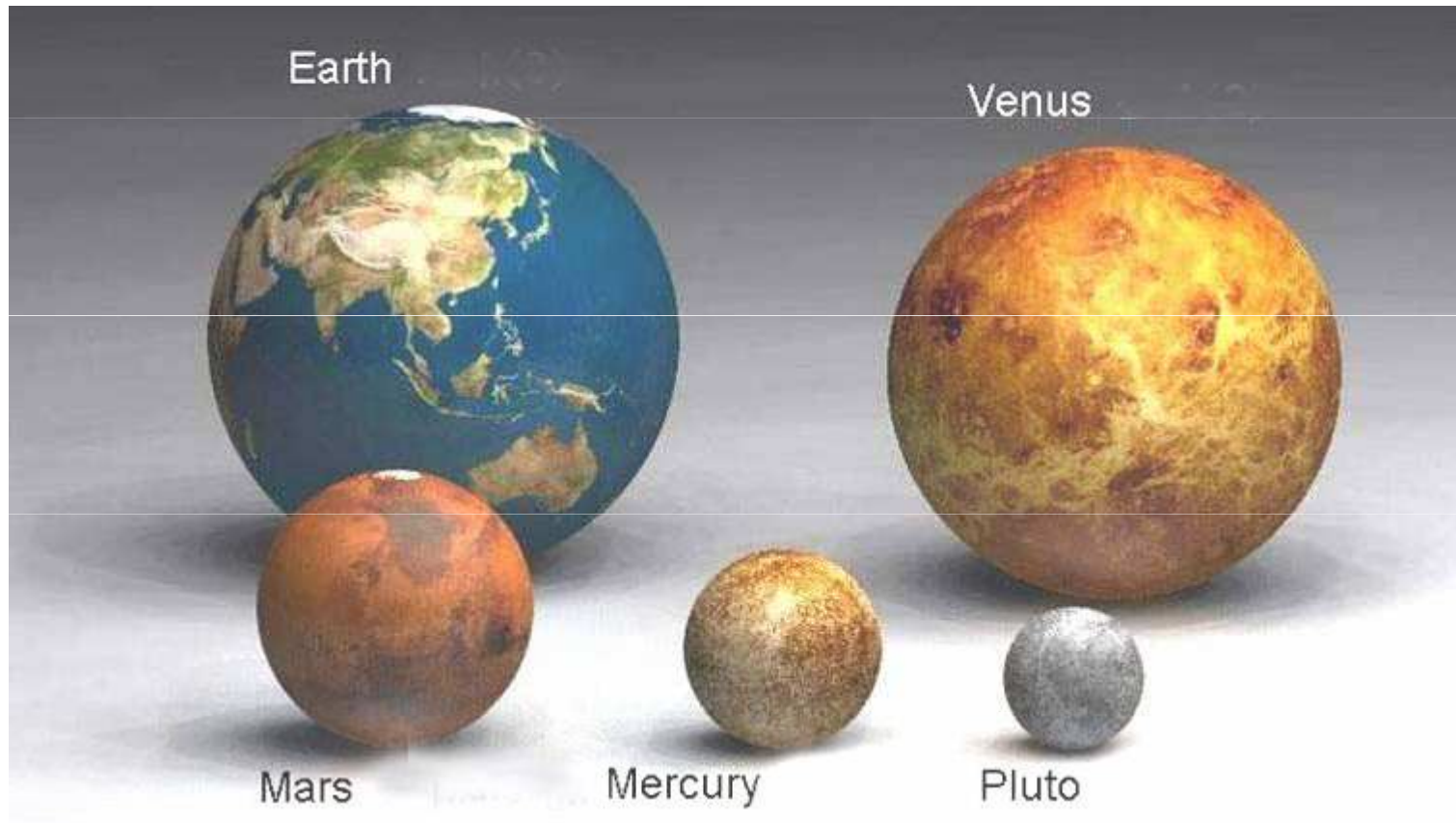
Scale

The Solar System and Beyond!

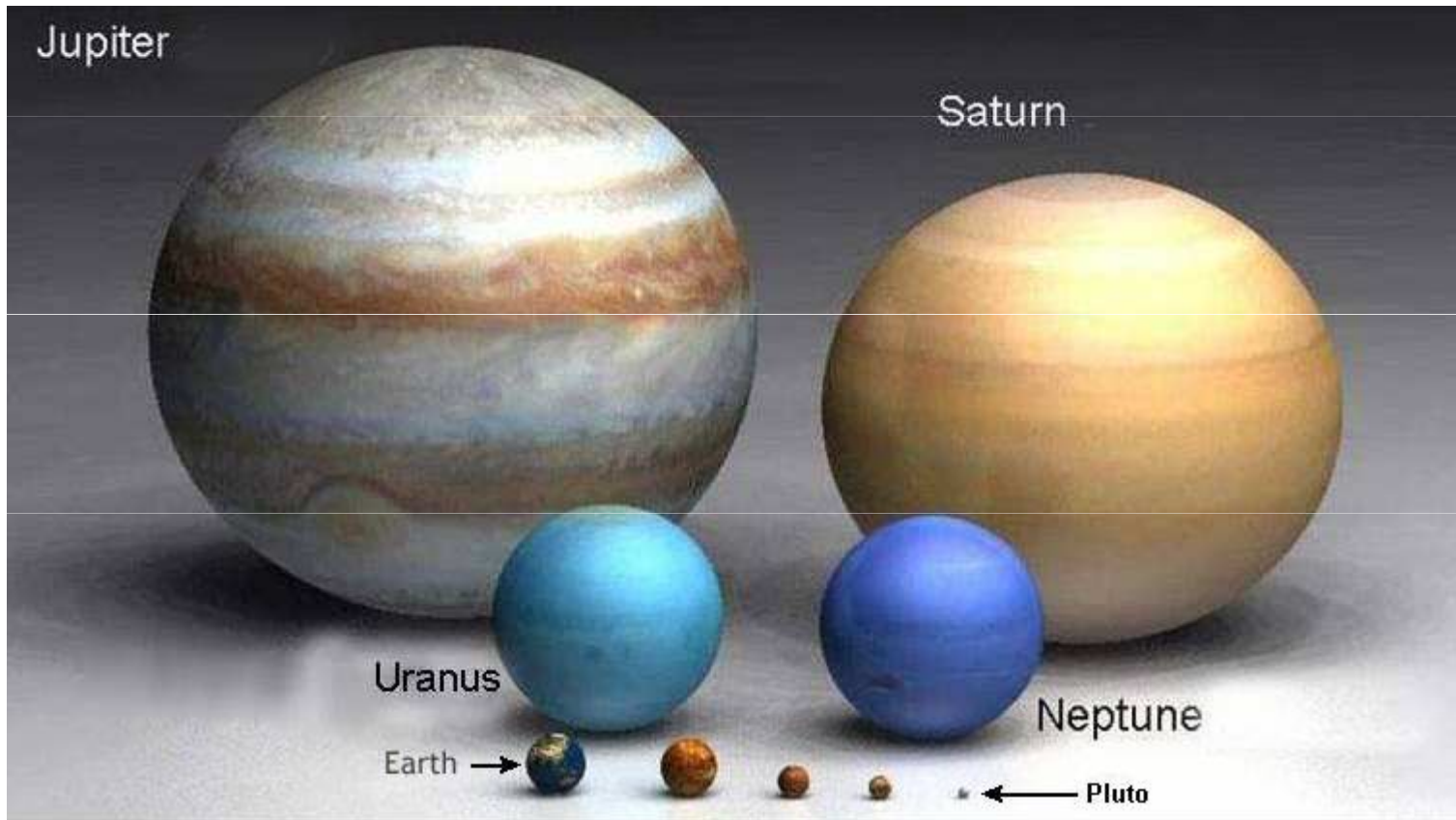
A real scale model of the Solar
System is at:

<http://www.phrenopolis.com/perspective/solarsystem/index.html>

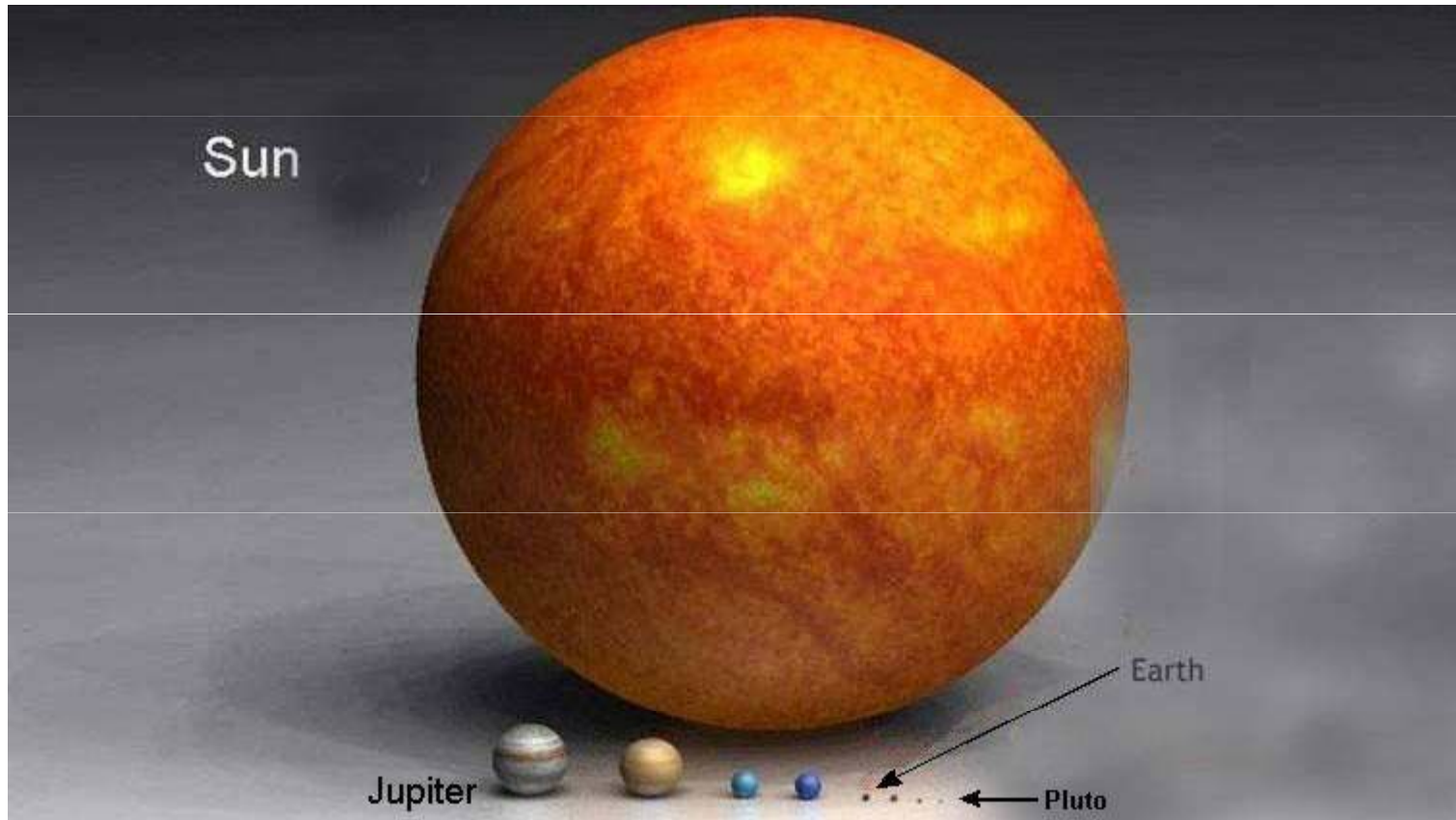
The scale of size in the Solar System



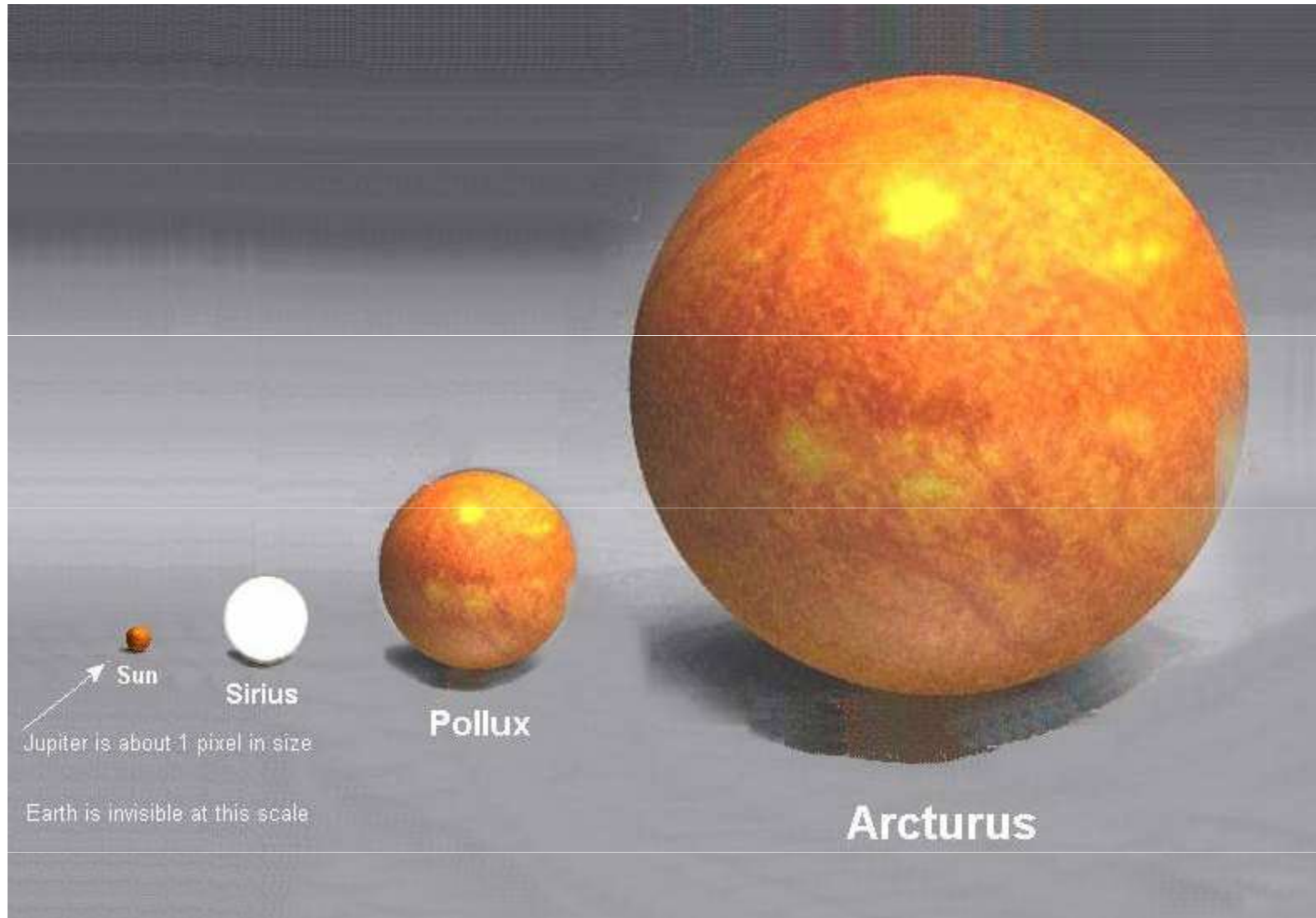
The scale of size in the Solar System

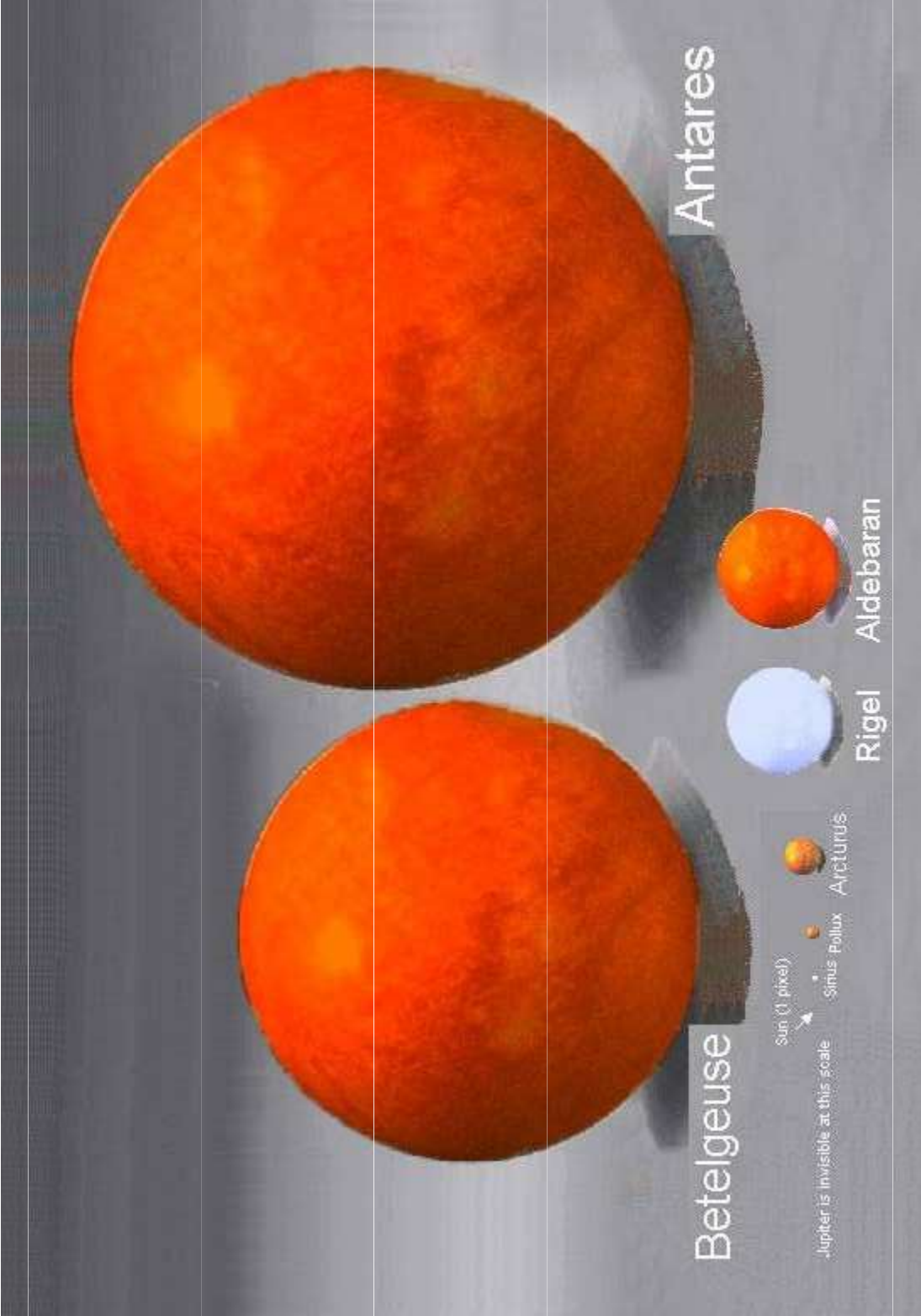


The scale of size in the Solar System



Now moving **beyond** the Solar System





Antares

Betelgeuse

Sun (1 pixel)

Jupiter is invisible at this scale

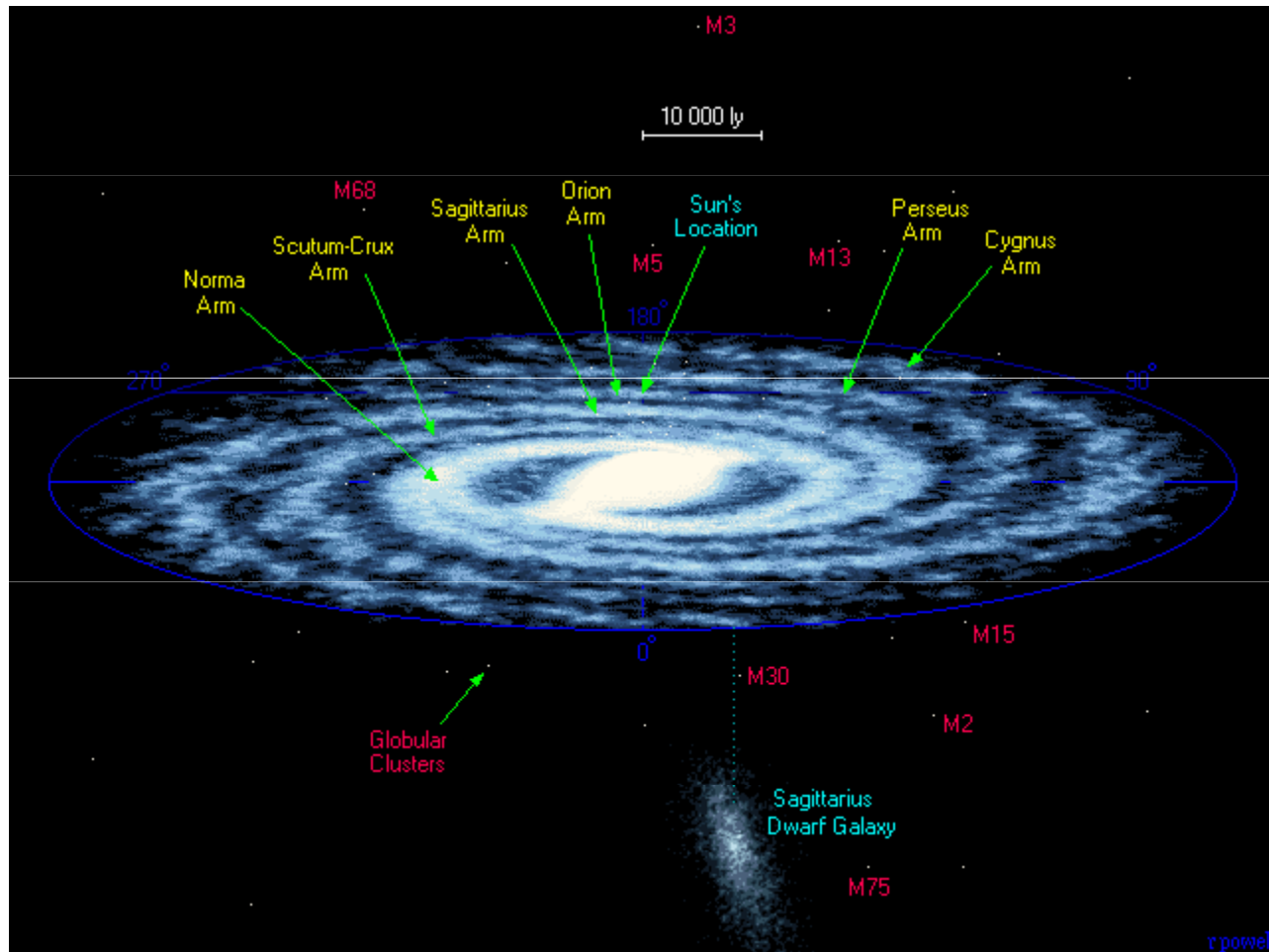
Sirius Pollux

Arcturus

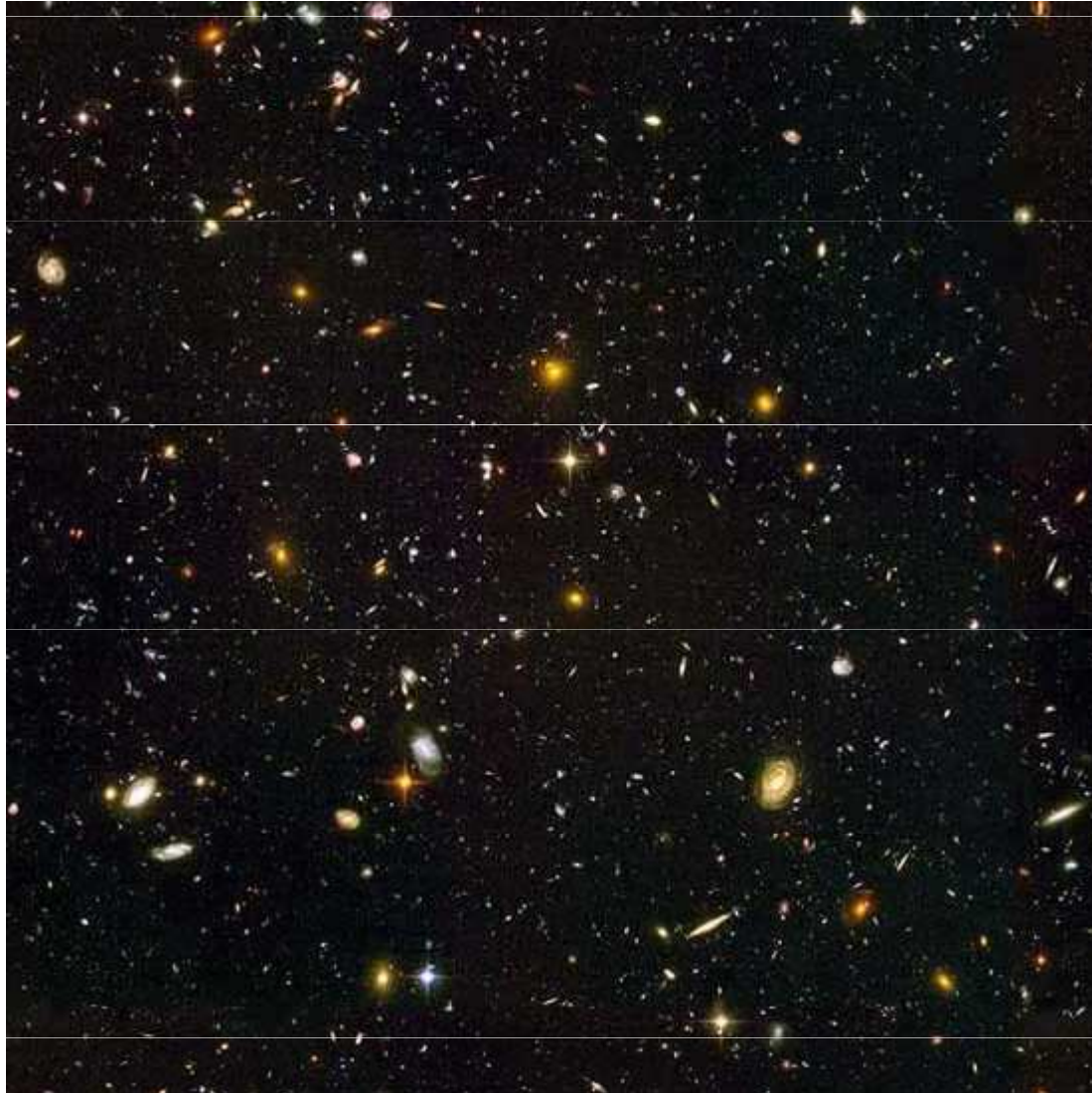
Rigel

Aldebaran

Our Galaxy: the Milky Way




200 to 400 billion
stars



Photographs from
the Hubble Space
Telescope

Each of these is
not a star

A deep-field astronomical image showing a vast field of galaxies. The galaxies are scattered across a dark background and exhibit a wide variety of colors, including blue, purple, white, yellow, and orange. Some galaxies are bright and clearly defined, while others are faint and appear as small points of light. The orientations of the galaxies vary, with some showing distinct spiral or elliptical structures. The overall scene is a rich and diverse collection of celestial objects.

Each of these
is a **galaxy**